



ORDERS. CATALOGING. PAYMENTS



ORDERS

DMS Systems provides multiple ways to process customer orders including Counter, Phone Sales, EDI from various e-Commerce sources and numerous Industry computer systems.

- **Warehouse Orders (Pick Tickets)** - This procedure immediately relieves inventory balances and updates available credit as each line item is entered. Order quantity, ship quantity, and unit price is shown for each item. The order dollar totals for 'requested', 'shipped', and "backordered" are displayed.
- **Counter Orders (Point-of-Sale)** - This procedure is designed for "Point-of-Sale" use where immediate invoices are required. Pricing and taxes are produced immediately in a finished invoice while updating the inventory and Accounts Receivable files. Cash drawers, cash tape printers, and bar code readers are available with this POS feature.
- **Service Work Orders (Work-in-Progress)** - Allows users with repair/rebuild facilities to maintain and update an open work order file by vehicle and technician for work or service in progress until the job functions are completed and ready for final billing. Inventory is allocated as work is done along with providing up-to-date parts and labor totals.
- **DX+ Qwik-Order Web/EDI Orders** - This module converts e-commerce orders from customers using the DMS Qwik-Order Module into pick tickets at the designated host or remote warehouse or store location. Qwik-Order also supports the processing of EDI/FTP orders from customer Shop Management Systems including Mitchell I and RO Writer and provides optional interfaces to Federated Fed-Link, ACDelco WIP, Wrenthead Central, Nexpart, and Motorcraft e-Counter.
- **Remote Branch Store "Buy-out" Orders** - This feature converts remote branch store purchase orders into pick tickets at the warehouse or other branch locations and manages these inter-company transactions on a real-time basis including back-end GL accounting of inventory transfers between locations and companies.
- **DX+ Hub & Spoke Management** - This module is designed for companies with multiple branch locations that are serviced frequently, primarily by their own delivery trucks. This feature totally automates the replenishment and stock-balancing across locations while automating returns of overstock, warranty, and core items back to the Hub location.

Executive Person

ORDER ENTRY (TOLSTON'S)

Order: 9006 TOLSTON'S TIRE & AUTO Order Total: 108.58
 1100 BRANCH STREET
 Location: 1 WILSON, NC 27893 252-985-2500

Line Items	Totals	Ship to	Misc.									
Item Number	Quantity	Manufacturer	Type	Price	Factor	Cost						
Item Description												
Purchase Order		B/O <input checked="" type="checkbox"/>	Tax <input type="checkbox"/>	Tran Code IS		Notify buyer <input type="checkbox"/>						
Release code												
Actions	Order	Ship	UOM	Qty	Item	Alt	MP	TC	Avl Here	Avl All	Price	Sell A
	1	1	EA	1	M-55A		MEL	IS	68	103	50.70	38.03
	12	10	EA	1	51515		WDX	IS	0	30	6.90	5.18
	1	1	EA	1	M-55		MEL	IS	28	87	25.00	18.75

Alberville 1-256-878-4381
Huntsville 1-256-382-5680

Home page

Auto Catalog
Item Check
Change Last Item
Freight Maintenance
Product Catalog
CRM
Expand/Collapse
Save as Quote
Cancel Order
Park Order
Release Order

FEDERAL MOGUL
CARDONE
MONROE

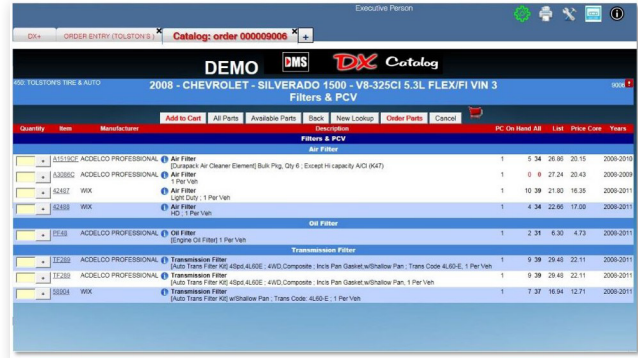
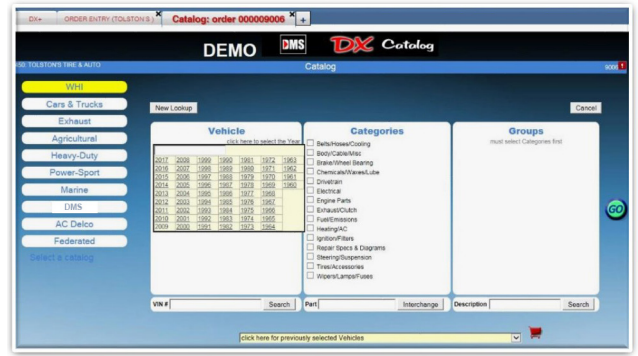
Request a Password: lib@seaparts.com
 General Inquiries: ase@seaparts.com
 MSDS requests: msds@seaparts.com

Click Here for this Month's Specials

CATALOGING

Supporting our robust Ordering capabilities are multiple Automotive Industry catalogs and DMS' custom 10 level drill-down catalog database for creating your own unique catalog for both internal sales and e-Commerce applications.

- **DX+ Specialty Catalog** provides a Warehouse Distributor or Manufacturer the ability to create their own unique user-defined 10 level drill-down database for customized product look-ups for both their internal sales network and their e-commerce users. This catalog database tool supports extensive kit cataloging used by many of DMS' Engine Parts customers.
- **DX+ Qwik-Cat** is an Industry-leading Graphical User Interface that works from all major Internet browsers. It is easy-to-use and offers extensive ACES-compliant Auto Parts and Light/Med. Truck Parts coverage. It allows a Warehouse Distributor customer a choice of using multiple catalog databases that vary in price and line coverages according to the Warehouse Distributor's business model and their customer base(s).



Catalogs supported are:

- WHI Part Expert (ACES)
- Show Me The Parts (SMTP)
- The Group (Federated, Pronto, & ADN)
- PartsLink (Collision)
- Engine Kit Catalog
- DX+ Specialty Catalog (Build Your Own)

PAYMENTS

Completing the DX+ System's Ordering & Cataloging modules is our DX+ Qwik-Pay real-time PCI compliant credit/debit card solution allowing staff and customers to pay by card for retail, commercial & e-Commerce transactions.

DX+ Qwik-Pay™ is an integrated Credit Card service via an Internet interface for POS, Call Center and eCommerce applications and features these great benefits:

- Supports EMV (Chip in card) for card-present transactions at your POS counter*
- PCI compliant encryption for all Credit & Debit Card transactions
- Signature capture for POS invoices and Document Center storage
- Supports all major Credit Cards
- Supports Debit Cards with Pin Pad features
- Competitive processing fees equal to or better than your existing processor rates
- Eliminates dedicated phone line costs with seamless Internet connection from DMS Server
- Secure storage of Credit Cards with encrypted token technology (xxxxxxxxx1234)
- Allows unlimited storage of encrypted Credit Cards per customer

DX+ Qwik-Pay software offers (4) integration points for this cost-saving application that includes:

- Local POS activities* (card present)
- Access from Call Center telesales (card not present)
- Access from Cash Application activities for payment on account (card not present)
- Option from Qwik-Order B2B e-Commerce for payment of invoice (card not present)

Qwick Pay



*Requires Dejavo card & signature capture device

DMS Systems is Partnered with 1st Data's Clover Connect Integrated Payment Systems® for PCI Compliant Credit and Debit Card Transactions.

Clover Connect and DMS will be proactive to ensure that their integration always meets the latest PCI standards to protect DMS customer's business. Clover Connect's versatile platform provides real-time transaction information, transaction history, cross-store reporting, daily batch and deposit details, and monthly statements. With Clover Connect's unique business model, we are able to match competitor's rates while still keeping our industry leading customer service and support in place. Our experts are available to take calls and answer emails, regardless of the day or hour.